

ThinkTank Client Requirements

Introduction

This document describes the client requirements for running ThinkTank. The ThinkTank client is the portion of the application that executes on a user's workstation. The requirements for the server are described in a separate (forthcoming) document.

Overview

The following are the requirements for running the ThinkTank client. This list is intended mostly for Information Technology staff that is familiar with the terms and how to enable the features of the web browser.

- Web Browser
 - Internet Explorer 7.0
 - Firefox 2.x
- JavaScript must be enabled
- Flash 7.x, 8.x, or 9.x. We recommend Flash 9.x for the associated performance improvements.

Client Hardware Requirements

The following are the application limitations based upon internal testing with a single 1.5 GHz Celeron M processor and 512 MB of RAM with a screen resolution of 1024x768. The values given below represent the limits of each of the activities based upon this hardware configuration.

Activity	Limit	Note
Categorizer	750 contributions	A contribution is a category, idea, or a comment.
Alternative Analysis (AA)	250 cells	The number of cells is equal to the number of ballot items multiplied by the number of criteria.
Rank/Order/Vote (ROV)	100 items	
Action Planner	250 cells	See the note for AA for the definition of cells.

Monitoring of the Flash engine indicates that it uses approximately 100 MB of memory. This memory usage should be taken into account when planning the physical and virtual memory of a machine. A client machine that has a faster processor or more memory may improve the performance slightly.

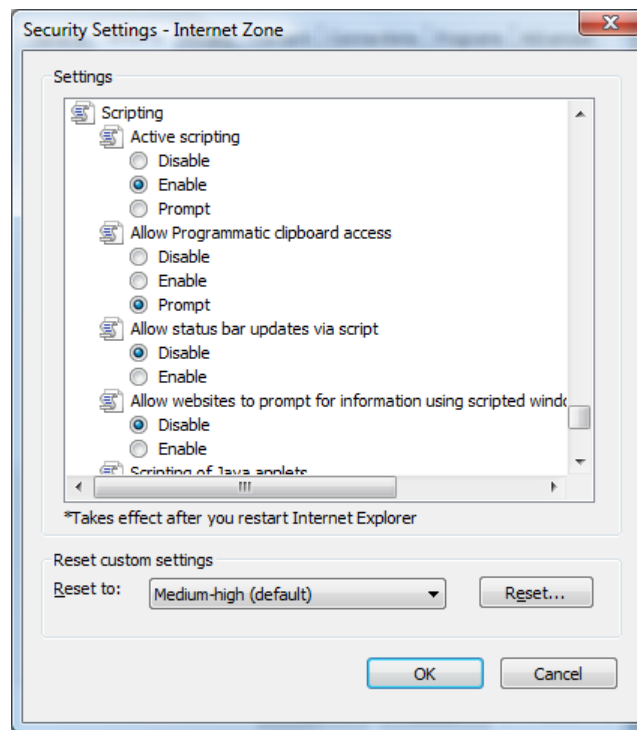
Web Browser

In this section, we describe how to determine whether or not a client has JavaScript enabled and the Flash runtime environment installed.

Internet Explorer

In order to determine whether or not JavaScript is enabled, follow these steps

1. Open *Internet Explorer*.
2. Click the **Tools** button and then click **Internet Options**.
3. Click the **Security** tab.
4. Examine the settings available through the **Custom level...**

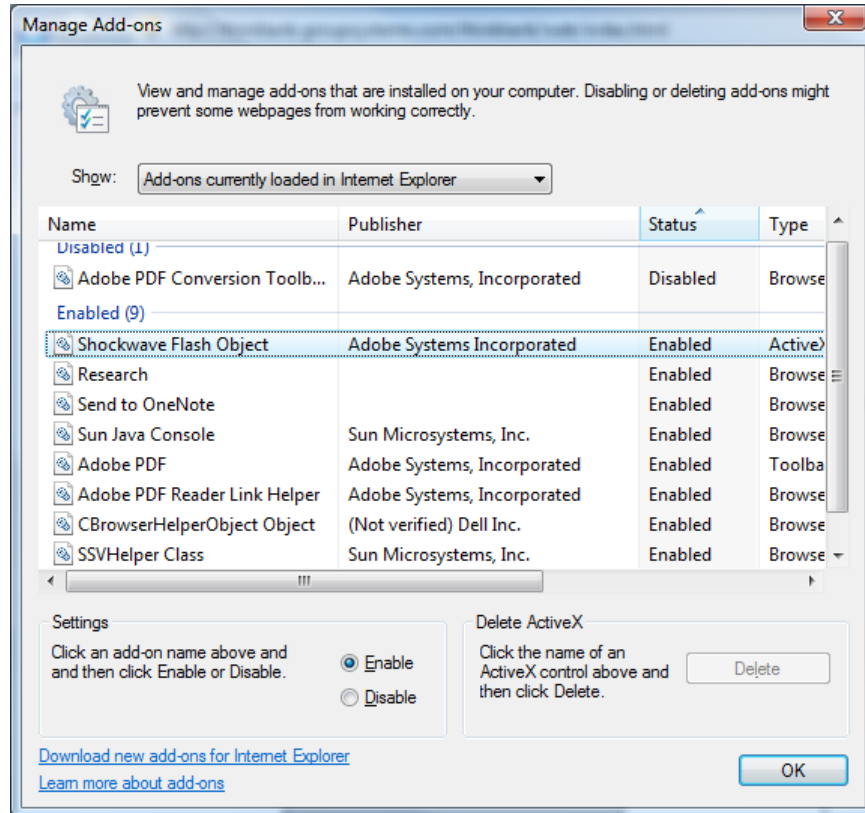


If “Active scripting” is enabled, then JavaScript is enabled. If “Active scripting” is disabled, then please check with the system administrator of your organization as to the policy regarding JavaScript. If the organization’s policy does not allow JavaScript, then you cannot run ThinkTank.

In order to determine whether or not the Adobe Flash runtime environment is installed, follow these steps

1. Open *Internet Explorer*.
2. Click the **Tools** button and then place your mouse on **Manage Add-ons** and finally click **Enable or Disable Add-ons**.

3. Examine the Enabled Add-ons and look for “Shockwave Flash Object”. The version of the Flash engine may be determined by the Filename column.

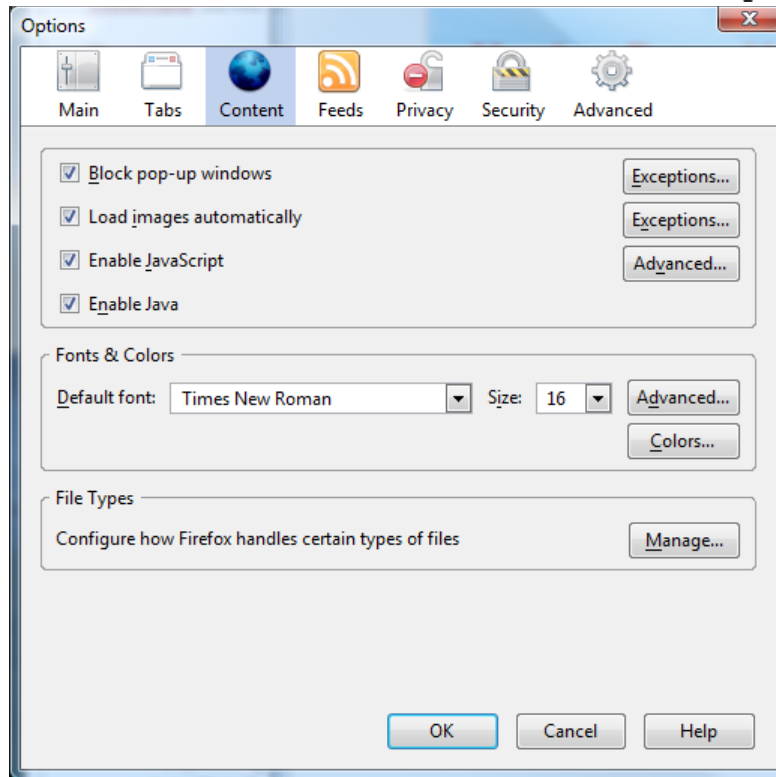


If the runtime engine is not installed, please consult your organization’s system administrator on its policies regarding the use of Flash. If Flash is not allowed, you cannot run ThinkTank.

Firefox

In order to determine whether or not JavaScript is enabled, follow these steps

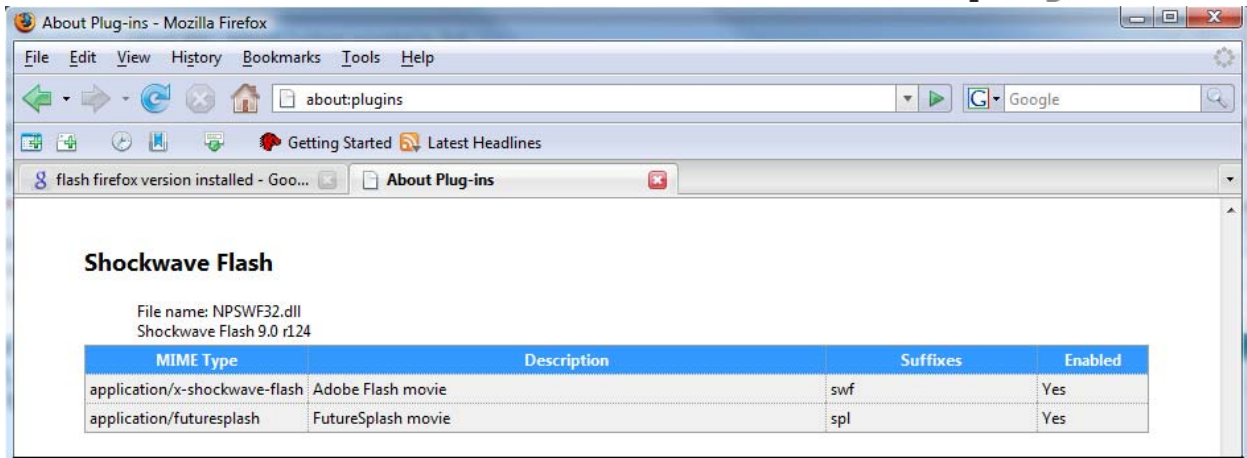
1. Open *Firefox*.
2. Click on **Tools** and then **Options...**
3. Click on the **Content** button.
4. Determine whether or not JavaScript is enabled by examining the dialogue box



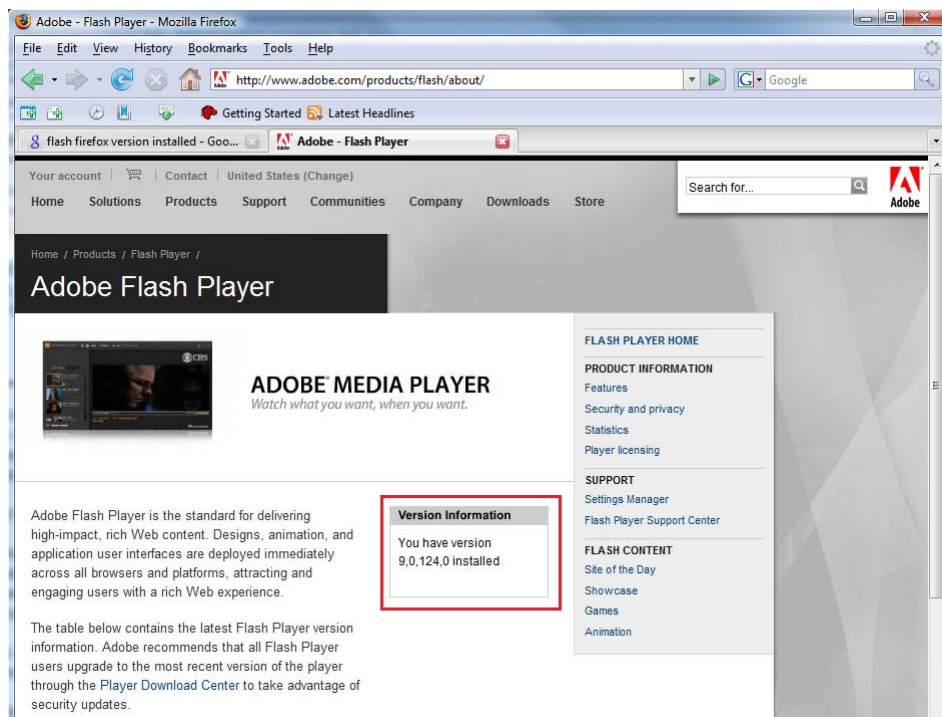
If the “Enable JavaScript” option is not checked, then JavaScript has been disabled. Please check with the system administrator of your organization as to whether or not JavaScript may be enabled. ThinkTank requires the use of JavaScript.

In order to tell whether or not you have the Adobe Flash player installed, follow these steps

1. Open *Firefox*.
2. In the location bar, type “about:plugins” and either hit the *Return* key or press the “Go to Address in the Location Bar” button.
3. The *Firefox* browser will provide information on the installed plugins. Look for the section entitled “Shockwave Flash”



In this example, the client machine has version Shockwave Flash 9.0 r124 installed. Another method is to visit the [Adobe Flash Player Test Page](http://www.adobe.com/products/flash/about/) (<http://www.adobe.com/products/flash/about/>). On the page, look for the "Version Information" as shown outlined in the red box of the snapshot below.



If you have been unable to verify that Shockwave Flash is installed using either of the methods above, then please contact your organization's system administrator as to whether or not Adobe Flash is installed. ThinkTank requires the use of the Flash runtime engine.